

**STEP UP to
YOUR FUTURE**



Call or Visit today!

877-CCC-0780 | www.cccneb.edu

f FOLLOW US
CentralCommunityCollege

SNAP US
cccneb

TWEET US
@cccneb.edu

WATCH US
Central Community
College Nebraska

TAG US
cccneb

Affirmative Action/Equal Opportunity Institution

INFORMATION & ENTERTAINMENT FOR ALL AGES

BOOKS • MOVIES • TECHNOLOGY

To find all of our amazing classes and events,
check out our Events Calendar at
<https://columbuspl.librarycalendar.com>

**2500 14th Street
Downtown Columbus
402-564-7116**

www.columbusne.us/library
Find Us on Facebook

 **Columbus Public
LIBRARY**
connecting people and ideas

Welcome

Welcome to Columbus and Platte County! We are so happy you are here and invite you to explore and experience all our communities have to offer! Check out our walking/biking trails, many parks, camping, dining and lodging options!

There is something here for everyone and no two visits are the same! Take time to visit our boutiques and unique finds in historic downtown Columbus or one of our famed attractions like the Pawnee Plunge Water Park, Andrew Jackson Higgins National Memorial, and US 30 Speedway or head to the horse

races and place your bets at the longest track in Nebraska. Coming this summer, you can try your luck at the new casino!

Consider this your formal invitation to visit Humphrey Days, the Platte Center 4th of July Celebration, Lindsay's Pivot Days, or our annual Columbus Days Celebration in August! Come for the day, stay for a night (or two) and experience our "Something Good" each time!

We are proud to call Columbus and Platte County home and cannot wait to welcome you!



Theresa Grape
Convention & Visitors
Bureau Director
402-276-3606
tgrape@plattecounty.
ne.gov
1464 26th Avenue,
Suite 100
Columbus, Nebraska



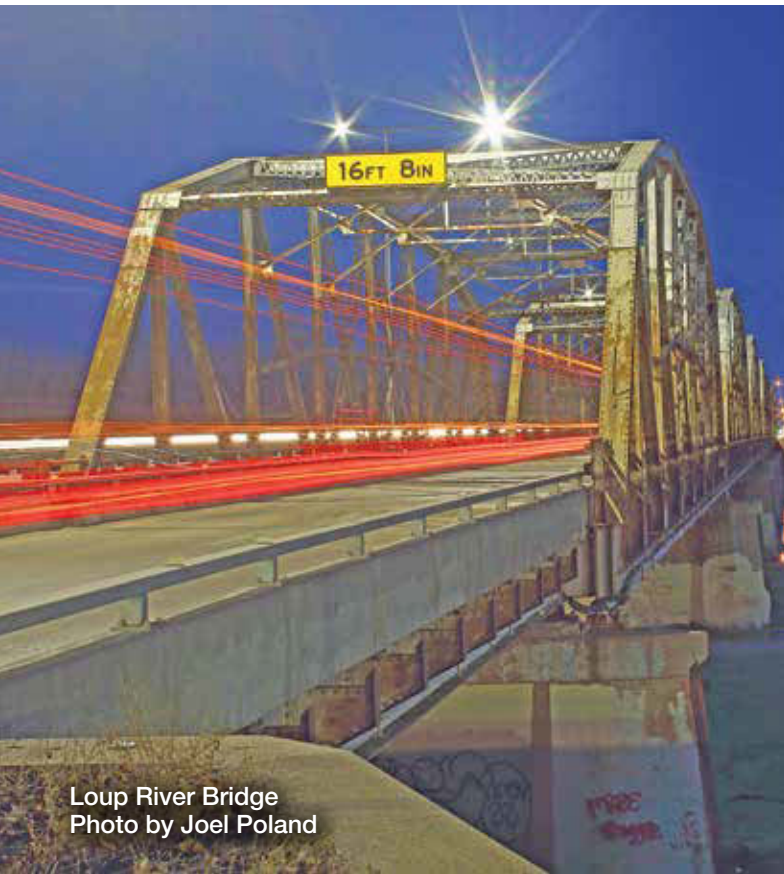
Face painting at Columbus Days



Lynette's Dance at Columbus Days



Heartland Gymnastics at Columbus Days



Loup River Bridge
Photo by Joel Poland

Eat. Shop. Explore.
LOCAL

Inside the Guide

6 | THE BEGINNING OF SOMETHING GOOD
A business venture develops into an industrialized community

8 | FUN FACTS
Did you know?

11 | PAWNEE PLUNGE WATER PARK
Slides, lazy river & fun for the whole family

12 | ANDREW JACKSON HIGGINS MEMORIAL
History of Columbus man who invented the LCVP used in WWII

14 | HUMPHREY VETERANS PARK
Recognizing servicemen and women across all branches of the United States military

15-17 | PLACES TO PLAY
Lakes, golf courses, parks & more

18, 19, 22 | FOOD & DRINK
From steaks to Mexican food, we have a place for you

20-21 | COLUMBUS AREA MAP
A piece of history lies within the walls of these places

23-27 | FAMILY FUN
Unique recreational opportunities for the entire family

28-30 | PLACES TO EXPLORE

31-32 | PLACES TO SHOP
Shop your heart out at 50+ unique boutiques & finds

33 | GETTING AROUND
We have your transportation needs covered

34-35 | LINCOLN HIGHWAY

36-37 | PLACES TO STAY
Great accommodations to rest your head

38-39 | PLACES TO WORSHIP

The Columbus Area Visitors Guide is a publication of the CVB. Download the Something Good App for accurate information on events, places, shops, etc. We regret any omissions or errors.

Designed by Lee Enterprises and published by
The Columbus Telegram, 1254-27th Avenue, Columbus, NE 68601 1-800-279-1123

WE'RE
NEBRASKA
IN A BANK



Nebraska is kindhearted.
We look out for each other.



COLUMBUS 210 East 23rd St., 402.562.8936
2661 33rd Ave., 402.562.8935



MORE FUN TO COME IN 2024



Must be 21 or older to gamble. Know When to Stop Before You Start. Gambling Problem? Call 1-833-BETOVER (Nebraska) or 1-800-522-4700 (National). ©2023. Cassara License Company, LLC.

Kay's Place for Massage Therapy



402-563-2106

1559 23 Avenue
Columbus, NE 68601-5022

Therapeutic massage has been proven by scientific research to relax and stretch muscles; increase range of motion; and could release “knots” that can cause pain and discomfort. Life is fast-paced, we work hard and play hard; often pushing our body to its limits. Call us to find time that fits your availability.

Massages by appointment only.



.....
Massage Therapy is a licensed profession in Nebraska. A license for the massage establishment and each individual massage therapist is displayed in a prominent location.

Massage Therapy, CranioSacral Therapy, Trigger Point Therapy, Reiki, Positional Release, BioMat, KinesioTape, & Ear Candling are available services.

The logo for the Columbus Area Children's Museum, featuring four stylized shapes in a row: a pink semi-circle, a red triangle, a yellow semi-circle, and a green triangle.

Columbus Area Children's Museum

Safe Environment - Explore - Create - Learn - Play

A collage of colorful illustrations showing children playing with blocks, a boat on water, and a hand pointing to a QR code.

Join Now!

Únete Ahora

Membership

Membership

Membership

columbuslearnandplay.org
2500 14th Street, Ste. 1
Columbus NE 68601
(531) 230-8091

The beginning of SOMETHING GOOD



Early in 1856, several men living in Columbus, Ohio, dreamed of a bold business venture: the establishment of a town along the route of the proposed transcontinental railway. By March they had formed the “Columbus Town Company.” Believing the logical choice for a railroad would be in the wide, flat Platte Valley that stretched from the Missouri to the mountains, they chose to locate their town at the confluence of the Loup and Platte rivers in the Nebraska Territory.

Eleven of the 13 men were of German descent, one was Swiss, and one was Irish. They ranged in age from 22 to 42. They traveled by ox team 80 miles west from Omaha arriving at the Columbus Settlement site on May 29, 1856. Using trees from along the Loup River, they built a log cabin with a thatched roof. This served as a home for the colony until other houses could be built.

When more pioneers arrived in the new town, a sawmill, grist mill, and a brewery sprang up. The well-established village was an easy choice for county seat when the area

north of the Platte was reorganized.

The “choice location” not only placed Columbus on the main line of the Union Pacific Railroad, but later as a hub for branch lines such as the Atchison & Nebraska lines from Lincoln, and the Omaha, Niobrara and Black Hills lines to Norfolk.

Buffalo Bill was a frequent visitor to Columbus, being a good friend of the North Brothers. The North Brothers were known for beginning and overseeing the group of native Americans known as the Pawnee Scouts. The Scouts were renowned for the assistance they provided the U.S. government during its westward expansion.

Buffalo Bill so enjoyed Columbus that it was the site for the first full dress rehearsal of Buffalo Bill’s Wild West Show. The wild west extravaganza formally opened in Omaha a couple days later.

With the adoption of the automobile as the preferred method of transportation, the cry “take Nebraska out of the mud” resulted in paving the old Mormon Trail/Lincoln Highway (U.S. 30) and the Meridian Highway (U.S. 81) making Columbus the “crossroads of the nation.” Bridges over the rivers were improved and a viaduct was built across the busy U.P. tracks.

By 1910 Columbus had a population of 5,000, a sizeable number of inhabitants for those days. It was a strong commercial point for goods going west. The town’s next big growth spurt came in the mid part of the century when the Columbus economy became three pronged: industry, agriculture and electricity.

Adapted from Irene O’Brien’s article for the Columbus Area Chamber of Commerce



Running of the Frankfurters at Columbus Days



Parks | Camping | Boating | Trails | Fishing

Loup's parks are full of recreational opportunities.

There's no cost for your visit.
Even the electrical hook-ups are free.

Learn more at www.loup.com.



Banking services for our community.

Become a member-owner today.

ONEUNITED
FEDERAL CREDIT UNION

Banking with you.

bankingwithyou.com

Federally Insured by
NCUA

Platte County FACTS

■ The Lincoln Memorial Highway (US Hwy 30, New York to San Francisco) and the Pan American Hwy (US Highway 81), Winnipeg to Galveston were built through Platte County in the early 1900's and cross paths in Columbus.

■ Columbus was honored to be one of the first 2 cities in the United States to receive steel from the fallen New York World Trade Center Twin Towers. The steel is displayed at the Andrew Jackson Higgins Memorial in Pawnee Park.

■ Columbus is home to three public power districts: Nebraska Public Power, Loup Power District & Cornhusker Public Power. Hence "the City of Power & Progress."

■ Platte Center gets its name for being at the center of Platte County.

■ Buffalo Bill practiced his "Wild West Show" in Columbus before taking it on the circuit.

■ The Fieldhouse has the longest indoor walking track (1/4 mile) and full-size indoor soccer field in the region.

■ Tarnov, Platte County, was bombed on August 16, 1943, during a practice run during World War II.

■ Glur's Tavern in Columbus is the oldest continuous operating tavern west of the Missouri River.

■ Columbus is known as the most industrialized city per capita in the State of Nebraska.

■ Monroe NE was named after former President James Monroe and is home to the Horn T Zoo.

■ Max Carl (Gronenthal) is a singer/songwriter for Grand Funk Railroad and 38 Special and grew up in Humphrey.

■ Columbus is the second original location to Godfather's Pizza.

■ Columbus/Duncan is home to Dorothy Lynch salad dressing – pleasing salad lovers all over the U.S.

■ More than 11 square miles of Platte County is comprised of water.

■ Home to the only 1 mile horse track in Nebraska.

connect with us!

www.TheColumbusPage.com



@CoINEChamber

@SomethingGoodColumbus

Your one-stop information source!

- Community Events
- Member Directory
- Visitor Information
- Community Calendar
- and much more!



Columbus Area Chamber of Commerce
753 33rd Ave | Columbus, NE | 402-564-2769





Columbus Water Tower



Fishing at Lake North



Pawnee Park

HEY THERE,
WHAT'S YOUR SIGN?
HERE'S OURS...



CENTURY 21
Realty Team
2626 23rd Street
Columbus

FOLLOW US



century21realtyteam.com



Columbus
UrgentCare

**LET OUR
FAMILY
TAKE CARE OF YOURS!**

We are here for the unexpected.

No Appointments Needed | Walk-ins Welcome

Monday - Saturday | **Sunday** | **Holidays**
7 am - 7 pm | 8 am - 5 pm | 8 am - 1 pm

SE corner of 30 Center Mall | columbusurgentcare.org

402-562-5400

HEALTHY

Dining Options

Available at AREA RESTAURANTS



Big 10 Sports Bar & Grill
510 E 23rd St., Columbus, NE
402-562-0040



El Tapatio
2721 13th St., Columbus, NE
402-564-6645



Burrito King
2167 33rd Ave., Columbus, NE
402-564-9909



Dusters Restaurant
2804 13th St., Columbus, NE
402-564-8338



CK Grill & Bar
655 S 33rd Ave., Columbus, NE
402-563-4030



Tokyo Japanese Cuisine
2610 23rd St., Columbus, NE
402-606-4482



Husker House
1754 33rd Ave., Columbus, NE
402-564-4121



Tropical Smoothie Café
2280 33rd Ave., Columbus, NE
531-230-1568



Clean Slate Food Co.
(No physical location in Columbus, but delivery every Sunday to your home.)

Order online: cleanslatefoodco.com

Please contact the restaurant for a full list of healthy menu options.



**PAWNEE
PLUNGE**

402-562-4269

560 33rd Ave



Come Splash and Play!

- **Only FlowRider in Nebraska**
- 6-Lane Swimming Pool
- Diving Platform & AquaClimb Wall
- Lazy River
- Huge Water Slides
 - Swirl Bowl, Tube, Speed, Curve
- Interactive Ship for Toddlers
- Spray Park Area

OPEN
MID MAY -
MID AUGUST



<https://www.columbusne.us/631/Pawnee-Plunge>

“Andrew Higgins is the man who won the war for us... If Higgins had not designed and built those Landing Craft VP’s, we never could have landed over an open beach. The whole strategy of the war would have been different.” - PRESIDENT EISENHOWER

Andrew Jackson Higgins Memorial

Andrew Jackson Higgins was born in Columbus, Nebraska. Andrew’s father John came to Columbus in 1870 to spend a couple days interviewing famous Indian scout Major Frank North. John was so taken by the town he convinced his wife Annie to give up their dream of California and settle in Columbus, where Andrew was born in 1886.

Higgins’ experience with the shallow rivers in the Columbus area gave him a vision for a shallow-draft boat that changed the course of history. Founder and President of Higgins Industries in New Orleans, Higgins rose to international prominence during World War II for his design and mass production of “Higgins Boats.”

These craft gave the military the ability to transport men and equipment safely to beaches during amphibious landings in the war. Higgins Industries produced 20,094 boats during WWII.



www.andrewjacksonhigginsmemorialfoundation.org

The Higgins Memorial began as a class research project for several Columbus High School classes. They became so taken with the story of Higgins that a research project became a community memorial. The memorial includes a full-size replica of the famous Higgins Boat and bronze soldiers running from the boat depicting a soldier from each of the three wars in which Higgins Boats served. Around the boat are sand samples from landing beaches across the globe where Higgins Boats carried soldiers ashore.

A large bronze eagle sits atop a steel sculpture made from steel taken from the fallen World Trade Center towers. This honors those who lost their lives on 9/11 and those who continue to fight against terrorism. All sculptures at the memorial were created by internationally renowned artist Fred Hoppe.

The Andrew Jackson Higgins Memorial stands as a tribute to a Columbus native son who changed history...to veterans of all eras who have served and sacrificed...to the ongoing fight against the evil of terrorism...and also to the power of engaged young people to impact their community.



Sweatbox Boxing Club



Terrace Books



Wild Plum B&B

Convenient mailbox, document and pack-and-ship services. Get that and more at The UPS Store®.

Mailbox Services

A street address, not a P.O. Box number
Package acceptance from all shipping carriers

Digital Printing & Document Services

Full-service and turnkey solutions
Color and black & white printing and copying
Professional finishing
Binding, laminating, folding and collating
Custom printing
Training, marketing and operational materials
Flyers, newsletters, brochures, menus
Postcards, business cards, stationary and more

Faxing

Sending and receiving
Document Scanning Emailing

Package & Shipping

UPS® air products and UPS Ground
Full-service packing
International shipping
Postal services including postage stamps
Freight shipments

Moving Supplies & Packaging Materials

Boxes
Cushioning
Tape
Moving boxes & supplies

Additional Products & Services

Retail items
Notary services
Office supplies



We Mean Business

The UPS Store



PRINT AND BUSINESS SERVICES

Cherry Creek Plaza • 118 23rd Street Columbus, NE
phone 402-564-0112 • fax 402-564-3207

Check us out at: theupsstore.com/4594

Monday-Friday 8:30am-7pm - Saturday 9am-4pm - Closed Sunday



Humphrey & VETERANS PARK

The purpose of the Veteran's Park in Humphrey, Nebraska is to recognize servicemen and women across all branches of the United States military for their service and sacrifice to our great nation during times of war and peace. It serves as a

place of remembrance and solidarity, a place to celebrate honorable choices and sacrifices. It is where we reflect on the past and educate the future. As we move forward in an unsure world, we pray this memorial serves as a reminder of those who gave all so we may live free in this great country.

In 2015, the Humphrey American Legion Post 80 made the official decision to begin the process of building a new veteran memorial in Humphrey. In 2018, after years of planning and trying to find a viable location for the project, the Legion was given a parcel of land through a generous donation by Mark and Marcelline Foltz.





Quail Run Golf Course

Places TO PLAY

CITY OF COLUMBUS PARKS

www.columbusne.us

PAWNEE PARK

South Highways 81 and 30

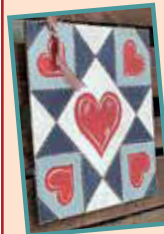
This 15-acre park, known as “The Picnic Capital of Nebraska,” adjoins the Loup River and Van Berg Golf Course. It offers a rose garden, 1904 Union Pacific steam locomotive, bell tower, Andrew Jackson Higgins Memorial, Pawnee Plunge Water Park, a skate/bike facility designed for skateboards, in-line skates, and BMX freestyle bikes, family recreation playground areas, sand volleyball courts, fishing, 9 hole disc golf course, horseshoe pits, tennis courts, 2,000 seat stadium with a lighted football field, an eight-lane all weather running track, one large picnic shelter for seating 850 people, and one small shelter seating 250. This park is also the home of American Legion and high school baseball programs.

GERRARD PARK

27th Street and 45th Avenue

This 28-acre park features a six diamond softball/baseball complex with lights on six of the fields for late evening or night play, six tennis courts, playground and shelter area along with two rest rooms and concession stands.

artzy haven



*Craft and Paint
Parties
Scrapbooking
Supplies
Craft Supplies
Hobby Classes
Special
Occasion
Boutique*



Come get your Artzy On!

402-606-4600

2422 13th Street • www.artzyhaven.com

CENTENNIAL PARK

5th Street and 8th Avenue

This 20-acre park located in southeast Columbus features three diamonds with lights for baseball and softball, two tennis courts, playground area, outdoor archery range, handball court, horseshoe courts, rest rooms and concession stand.

BRADSHAW PARK SOFTBALL COMPLEX

15th Street and 48th Avenue

This 18-acre softball/football complex features four softball/baseball diamonds (four with lights), two football fields (one regulation and one eight-man). Youth and high school softball and midget football leagues are scheduled here.

WILDERNESS PARK SOCCER COMPLEX

41st Street and 18th Avenue

This 42-acre park boasts a ten-field regulation size soccer complex along with rest rooms, concession stand, shelter and bleachers. American Youth Soccer Organization (AYSO), club and high school soccer are played here.

To make inquiries about Columbus parks, contact:

Betsy Eckhardt, Parks & Recreation Coordinator 402-562-4234
 Sydney Winger, Parks & Recreation Coordinator.....402-562-4261
 Joe Krepel, Park & Recreation Coordinator 402-562-4272
 Tom Ek, Park Superintendent.....402-562-4217
 Columbus City Offices402-562-4233
 PO Box 1677
 2500 14th Street
 Columbus, NE 68602-1677

For picnic shelter reservations, contact:

City Clerk's Office402-562-4224

- Airport Park..... Bill Babka Drive & 18th Avenue
- Air Vista Park.....27th Street & 7th Avenue
- Berne Square Park 6th Street & 26th Avenue
- Buffalo Square Park6th Street & 15th Avenue
- Fountain Square Park.....13th Street & 39th Avenue
- Frankfort Square Park.....13th Street & 26th Avenue
- Glur Park..... 28th Street & 26th Avenue
- Gruenther Park..... Gruenther Park Drive & Adamy Street
- Hanover Park.....14th Street & 16th Avenue
- Sunset Park..... 38th Street & 41st Avenue

*You will also find 18 unsupervised playgrounds with swings, slides, merry-go-rounds, teeter-totters, jungle gyms, small rocking horses and a splash pad at Glur Park.

**COME VISIT US IN
DOWNTOWN COLUMBUS**



**PICKET
FENCE
Cafe**

2714 13th Street • Columbus, NE
(402) 563-3915 •  Like us on Facebook



Columbus Soccer Club
Harvest Cup

LOUP POWER DISTRICT PARKS

www.loup.com/recreation

To make inquiries about LPPD Parks 402-562-5709 or 402-564-3171

LAKE NORTH PARK

A popular spot ideal for boating, water skiing, jet skiing, fishing, camping, swimming and picnicking. Located four miles north of Columbus, this 200-acre recreation area includes two boat ramps with two miles of beaches and the Two Lakes Trail trailhead, a 2.5 mile concrete hike/bike path that connects to miles of natural surfaced trails along the canal system.

LOUP PARK / LAKE BABCOCK

Four miles north of Columbus, this well developed, 40-acre wooded area includes camping, shelter, picnic areas, playground areas, and restrooms as well as outstanding wildlife habitat. The Bob Lake and Robert White Trails skirt Lake Babcock and connect to miles of natural and concrete surface hike/bike trails.



VILLAGE CENTRE

Avenue 3 & Hwy 30 | Columbus 68601



THE BARNES GROUP



BLiNG
GLAMOUR



Buckle



CATO
The Cato Corporation



DOLLAR TREE



Empress Express



FAMOUS footwear



HIBBETT SPORTS



JCPenney



McChristy Jewelers
THE DIAMOND & GEM GALLERY



maunces



Not Your Grandfather's
Smoke & Vapor



Touch-n-Tan
convenience is golden



BRIDAL
WEDDING, PROM, FORMALS
Your dress story starts here



Free Bike Share rental station at the hospital

HEADWORKS PARK

This 17-acre park is located 6 miles west of Genoa on Highway 22. This park features hiking, camping, picnicking, swimming and fishing.

POWERHOUSE PARK

This 4-acre park located 1.5 miles north of Highway 30 on 3rd Avenue adjacent to the Columbus Powerhouse features fishing, picnic grounds, camping, restrooms, and a playground.

TAILRACE PARK

This 9-acre area located three miles east and 1 mile south of Columbus is noted for exceptional fishing. It is located where the Loup Canal joins the Platte River. It includes primitive camping and a picnic spot with outstanding scenic and wooded beauty. The water has a very strong current here so swimming is not recommended. Entry via foot traffic only, no motor vehicle access.

AREA PARKS

MAPLE CREEK RECREATION AREA402-371-7313

A recreation area located along Highway 91 in Leigh that has fifty 50-amp RV camping sites and 10 primitive tent sites with a shower house and restrooms. Recreation includes a swimming beach, hiking, biking and horseback riding trails, picnic & playground equipment. The 160-acre lake has 2 boat ramps and is stocked with large-mouth bass, blue gill and channel catfish.

LOUP RIVER AND PLATTE RIVER

Both rivers, located south of Columbus, offer fishing and canoeing.

CLIMATE

Platte County enjoys the four distinct seasons - spring, summer, fall and winter.

AVERAGE DAILY TEMPERATURES

	Low	High
January	14	33
April	39	62
July	66	87
October	41	63

Average annual precipitation..... 29 inches

Average growing season..... 166 days long

Elevation: Columbus is 1,447 feet above sea level.

Open 24 Hours
SUPER SAVER

WELCOME BOB'S O-SAVE PHARMACY CUSTOMERS

Free in-town delivery Pharmacy
402-563-3349

www.Super-Saver.com
3318 23rd Street

Open 24 hours per day 7 days per week.

PROVIDING
SPECIALIZED
CARE NEAR YOU IS



THE FAITH DIFFERENCE.

SEEING PATIENTS IN COLUMBUS.

CARDIOLOGY

Ajay Chander, MD
(402) 564-9610

ENDOCRINOLOGY

Enas Al Zaghal, MD
Kaitlin G. Brau, MD
(402) 844-8680

INFECTIOUS DISEASE

Afua Ntem-Mensah, MD
(402) 844-8196

OPHTHALMOLOGY

Andrew Baldwin, MD
(402) 844-8097

ORTHOPEDICS

Jared Rickert, DO
Kendra Thiem PA-C
(402) 564-9610

PHYSICAL MEDICINE & REHABILITATION

Mahmut Kaner, MD
(402) 844-8078

RHEUMATOLOGY

Mukund Kumar, MD
(402) 844-8227

Learn more at frpsclinics.org.



FOOD & drink

38th Street Coffee

4115 38th St.
..... 402-564-1105

Ag Park Bar & Grille

822 15th St., Suite 200
..... 402-562-7625

Amigo's

309 23rd St. East
..... 402-563-2140

Apple Barrel Restaurant

(Inside Sapp Bros.)
517 E. 23rd St.
..... 402-564-8268

Applebee's Neighborhood Grill & Bar

328 E. 23rd St.
..... 402-562-5123

Arby's

2521 23rd St.
..... 402-563-4111

Barrel House Bar

2311 14th St.
..... 402-641-7582

Beautifully Baked Bakery

3411 21st St.
..... 531-230-1577

Big 10 Sports Bar & Grill

510 E 23rd St.
..... 402-562-0040

Big Apple Bagels

4471 41st St.
..... 531-230-7155

Bo's West Bar & Grill

3720 23rd St.
..... 402-564-7734

Brave's Kitchen

6767 Shadow Ridge Pl.
..... 402-942-4192

Burger King

2204 23rd St.
..... 402-564-9143

Burrito King

2167 33rd Ave.
..... 402-564-9909

Casey's General Store

2671 33rd Ave.
..... 402-563-1538
1118 8th St.
..... 402-563-3205
2903 23rd St.
..... 402-356-0302
3821 Howard Blvd.
..... 402-563-4212

CK Grill & Bar

655 33rd Ave. S.
..... 402-563-4030

Cork & Barrel

1354 27th Ave.
..... 402-910-9099

Dairy Queen

665 33rd Ave.
..... 402-564-7841

Daylight Donuts

1266 27th Ave.
..... 402-563-2011

Domino's

2409 23rd St.
..... 402-562-5656

Dusters/Gottberg Brew Pub

2804 13th St.
..... 402-564-8338

El Matador Cantina

2453 33rd Ave.
..... 402-564-9337

El Mezcal

1012 E. 23rd St.
..... 402-562-7455

El Tapatio

2721 13th St.
..... 402-564-6645

Elk's Country Club

5113 63rd St.
..... 402-564-1451

Empire Express

102 E. 24th St.
..... 402-562-1388

The Farmer's Wife Boutique & Coffee Company

112 Pine St., Lindsay
..... 402-428-9000

Frank's Grill (Micek's)

2807 12th St.
..... 402-835-2400

Freddy's

3606 23rd St.
..... 402-942-9072

Fuego Mexican Grill

3019 23rd St.
..... 402-942-9000

Glur's Tavern

2301 11th St.
..... 402-564-8615

Godfather's Pizza

770 33rd Ave.
..... 402-564-8515

Hely's Bakery

917 23rd St.
..... 402-270-1705

HomeGrown Nutrition

1925 23rd St.
..... 531-230-1650

Husker Steak House

1754 33rd Ave.
..... 402-564-4121

Hy-Vee Deli/China Express/Wahlburgers

3010 23rd St.
..... 402-563-4524

Java City Coffee

(Inside Hospital)
4600 38th St.
..... 402-564-7118

J&C Avenue Bar

1061 26th Ave.
..... 402-563-3635

Jimmy John's

825 23rd St.
..... 402-563-3300

Juice Stop
2334 23rd St.
..... 402-835-2000

K&L Corner, LLC
100 N. 3rd St., Humphrey
..... 402-923-0286

King Bar Cuban Pizza
1267 26th Ave.
..... 402-687-6274

KFC
1801 23rd St.
..... 402-564-3611

Klub 81
Highway 81/91 Junction, Humphrey
..... 402-923-1588

Kudron's Keg
308 Main St., Humphrey
..... 402-923-0318

La Riviera Food Truck
917 23rd St.
..... 402-606-0047

Lamplighter Lounge
(Inside Westbrook Lanes)
3156 51st Ave. NW
..... 402-563-3000

Little Caesar's Pizza
2416 23rd St.
..... 402-562-2277

Long John Silver's/A&W
220 23rd St.
..... 402-564-0770

Lupe's Bakery
2460 32nd Ave.
..... 402-942-9004

Little Caesar's Pizza
2416 23rd St.
..... 402-562-2277

Lone Star Trading Post
14100 Columbus Road Northeast
..... 402-564-5437

Long John Silver's/A&W
220 23rd St.
..... 402-564-0770

Los Des Taqueros
4704 Howard Blvd.
..... 531-230-1600

Market 23
2620 23rd St.
..... 402-564-3541

Maximus
329 23rd St.
..... 402-564-3636

McDonald's
3210 23rd St.
..... 402-564-6600



Big 10 Sports Bar & Grill

Micek's Shangrila
2506 12th St.
..... 402-564-3093

Monroe Tavern
410 Gerrard Ave., Monroe
..... 402-495-3375

Mugs N Jugs Bar N Grill
302 Main St., Humphrey
..... 402-923-0160

My Place Bar & Grill
904 8th St., Duncan
..... 402-897-2185

Oasis Bar
1264 27th Ave.
..... 402-606-4228

Oborny's Husker Bar
2313 11th St.
..... 402-606-4759

Panda Express
120 E. 23rd St.
..... 402-564-8292

Pawnee Bar
653 33rd Ave.
..... 402-564-7779



#exploreplatteco // Food and Drink

PepperJax Grill

3111 23rd St.
..... Coming Soon

Picket Fence Café

2714 13th St.
..... 402-563-3915

Pizza Hut

2510 23rd St.
..... 402-564-3366

Pizza Ranch

2266 33rd Ave.
..... 402-564-8131

Polish Pub Inc.

402 4th St., Platte Center
..... 402-246-3225

Quiznos

3208 42nd St.
..... 402-246-3225

Reeder's 11th St. Grub & Pub

2501 11th St.
..... 402-564-5767

Reg's 7 Mile Steakhouse

105 B 41 Rd. (S Hwy 81)
..... 402-564-8847

Regina's Kitchen

2402 14th St., Ste 10
..... 402-606-4829

Runza Drive In

1944 33rd Ave.
..... 402-563-3767

Sahara ZZA & Grill

1819 Howard Blvd.
..... 402-562-9051

Saru Hibachi & Sushi

4300 23rd St.
..... 531-248-1335

Scooter's Coffee

2117 23rd St.
..... 402-835-5510

102 23rd St.
..... 531-230-1333

Shenanigans

3808 E. 23rd St.
..... 402-563-9256

Ski's Bar and Grill

2403 11th St.
..... 402-606-4669

Small House Cakes & More

4428 23rd St.
..... 402-490-2391

Sonic Drive-In

2012 23rd St.
..... 402-835-4817

Stack & Steak Family Restaurant

3208 23rd St.
..... 402-563-2424

Starbucks (Inside Hy-Vee)

3010 23rd St.
..... 402-563-4524

3522 23rd St.
..... 402-276-7426

Subway

3019 23rd St.
..... 402-564-4113

2035 23rd St.
..... 402-564-2705

Walmart Supercenter
..... 402-562-6033

Super China Buffet

4306 23rd St.
..... 402-563-2777

Sweet Harvest Popcorn Shoppe

3401 21st St.
..... 402-546-0886

T-Bone Truck Stop

818 23rd St.
..... 402-562-6033

T-Bone #2

930 Lincoln Hwy, Duncan
..... 402-897-2715

Taco and Tequila 2

3017 23rd St.
..... 402-563-9300

Taco Bell

3408 23rd St.
..... 402-563-9300

Taco John's

3805 Howard Blvd.
..... 402-564-1022

Taqueria Vallarta

1520 17th St.
..... 402-276-1106

Tavern 1888

104 Pine Street, Lindsay
..... 402-920-8188

The Broken Mug Mini Mug Coffee Trolley

2200 28th Ave.
..... 402-835-5504

The Downtown Mug Coffee Shop

2500 14th St., Suite 1B
..... 402-835-2700

The Friedhof Oak Room

1270 27th Ave.
..... 402-710-2044

Think Treats

2022 11th St.
..... 402-992-5546



Brave's Kitchen

Tokyo Japanese Cuisine

2610 23rd St.
..... 402-606-4482

Tropical Smoothie Cafe

2280 33rd Ave., Suite 100
..... 770-821-1900

Valentino's Pizza

3100 23rd St.
..... 402-563-3542

Wendy's

3018 23rd St.
..... 402-564-2333

Wildflower Pastries

3216 13th St.
..... 402-606-4619

Wunderlich's Catering & Barley Shoppe

304 23rd St.
..... 402-563-3700

Zeekeyz Pork in a Boat

2407 11th St.
..... 402-910-6735

ONCE-A-MEMBER

ALWAYS A MEMBER!

OPEN TO THE COMMUNITY MONTHLY SPECIALS DRIVE THRU ATM ON SITE

DALE
COMMUNITY FEDERAL CREDIT UNION

JOIN TODAY!

WWW.DALECU.COM

INSURED BY NCUA

MAIN OFFICE: 2754 33RD AVE., COLUMBUS, NE 68601, 402-564-3253

BRANCH OFFICE: 704 W BENJAMIN AVE., NORFOLK, NE 68701, 402-371-2242

Family FUN

ARTS

ARTZY HAVEN

2422 13th Street, Columbus
.....402-606-4600

Artzy Haven is the largest locally owned scrapbooking store in Nebraska. They carry all kinds of mixed media art supplies and many items to complete your craft projects! Their focus is to educate, teach, and have a lot of fun! They have a fun special occasion gift boutique shop featuring something for every age! Artzy Haven studio is on our lower level, where we teach fun creative canvas and home

decor. Come check us out, we are definitely a one of a kind unique shop!

BINGO

AMERICAN LEGION

2263 - 3rd Avenue, Columbus
..... 402-562-8484
7:00 p.m. Wednesday

EAGLES CLUB

3205 12th Street, Columbus
..... 402-564-3361
7:00 p.m. Thursday

VFW CLUB POST 3704

2720 23rd Street, Columbus
.....402-563-3704
1:30 p.m. Sunday
(Except Easter)

BOWLING

BOULEVARD LANES

1819 Howard Blvd., Columbus
.....402-564-8022

Boulevard Lanes features 12 lanes for league and open bowling as well as a complete pro shop. The facilities include the Sahara Lounge, sand volleyball, a large game room and KENO.

HUMPHREY BOWL/ ROCKER S LANES

203 Main Street, Humphrey
..... 402-920-8008

The Trautman family invites you to recreate good-times at Humphrey Bowl / Rocker S Lanes. Our facility offers a pleasant family friendly atmosphere where patrons can eat, drink, and bowl. We're known for our classic burgers and wings with a variety of sauces. Play while your order is in the kitchen, we have 6 regulation lanes with modern score systems and retro ball returns. Finish the night off with a round of

foosball or shuffleboard while playing your favorite music on our digital jukebox. Private party & lane reservations welcome. We'd love to see you at Humphrey Bowl!

WESTBROOK LANES

3156 51st Avenue, Columbus
.....402-563-3000

Westbrook Lanes features 16 lanes, with new computerized scorecards for league and open bowling, as well as a complete pro shop. The facilities include the Lamplighter Lounge with grill, a large game room, sand volleyball and KENO.



Join us
**ON THE PATH TO
BETTER HEALTH**

Edward Discoe, MD Luke Lemke, MD
Jeffrey Gotschall, MD Craig Pekny, MD
Miranda Beran, PA-C

402.564.2816

1454 28th Ave | columbusmedicalcenter.com

Open to the Public
One of the "Top Ranked" Golf Courses
in Nebraska!



Experience the Quail Run difference.

Built on the Loup River and carved through large cottonwood trees, this 7,024-yard Frank Hummel design is not your average muni. With 6 sets of tee boxes, Quail Run is a challenge to golfers of any skill level. A true shot-maker's paradise! Call today and experience championship golf at a reasonable rate.

- 6 Sets of Tees For Any Level of Expertise
- Corporate or Group Outings
- Fundraising Opportunities
- Men's & Women's Golf Leagues
- Snack Bar & Grill
- Affordable Rates



Call to Reserve Your Tee Time! 402-564-1313
327 S. 5th Street • Columbus, NE 68601



AXE THROWING

AXE IN THE BOX

311 E 23rd Street, Columbus 402-606-4488
www.axeinthebox.com

Features 7 lanes and the latest and safest in axe throwing technology with digital scoring. Anti-bounce borders and safety-designed end grain targets are easier to stick, safer, and more axe-citing. TicTacToe, Zombie Hunter, and Line-Up-Four - with more games on the way! Over 35 different canned beer, ciders, and seltzers; as well as soda, water, and prepackaged snacks. Feel the Zing of the Fling!

FISHING

COLUMBUS POWERHOUSE

A 4-acre park located adjacent to the Columbus Powerhouse featuring fishing and a picnicking area.

KAPELS LAST RESORT 402-270-2337

Avid fishermen as well as the amateur angler will enjoy these peaceful, rustic surroundings located north of Columbus. Free fishing, with no license required in a lake stocked with trout, walleye, perch, catfish, bluegill, crappie, etc.

LAKE BABCOCK

Bullhead, carp, channel and flathead catfish have been taken from Lake Babcock.

LOUP CANAL

Carp, channel and flathead catfish and drum fishing. Record-breaking catfish have been taken from the Loup Canal. The silting basin west of Genoa and the Columbus Powerhouse are popular spots.

LOUP PARK

Located on the north and west shores of Lake Babcock just north of Columbus where fishing is excellent.

LAKE NORTH

Located 4 miles north of Columbus, Lake North offers 2 miles of beaches and 2 boat-launching ramps. A handicapped accessible fishing pier. Carp, channel catfish, drum, crappie and walleye have been taken from Lake North.

PAWNEE PARK LAKE (EAST)

Stocked with catfish, crappie, bluegill and bass.

SOCK POND

Located just southwest of Bradshaw Park, the lake boasts a large number of game fish including bass, bluegill, catfish and trout. Rowboats, canoes, sail boats, paddle boats & kayaks are permitted. Gas-powered motors prohibited.

SUNSET PARK/LAKE ESTHER

Stocked with catfish, crappie, bluegill and bass. Rowboats, canoes, sail boats, paddle boats & kayaks are permitted. Gas-powered motors prohibited.

TAILRACE PARK

This 9-acre park is located where the Loup Canal joins the Platte River, 3 miles east of Columbus and 1 mile south. It is noted for its exceptional fishing in season.

ESCAPE ROOMS

S.T.A.R. ESCAPE ROOMS

2705 13th Street, Suite 300, Columbus 402-658-5658

Overcome brain-bending puzzles, discover important clues and work together to escape the room within the hour. Do you have what it takes? There are 3 themed rooms with puzzles to delight your brain and just maybe stump your group. Enjoy a fun night out with friends, coworkers or family! Book online at www.starescaperooms.com.

**Lakeview
Community Schools**
*Celebrating 50+ Years
of Excellence!*

Small School Setting - World Class Students

*Our mission is to provide a strong
academic foundation and opportunitie
for all students to become productive
members of society.*

**For more information about the
educational and activity opportunities
that are available for students, visit
www.lakeview.esu7.org or call (402) 564-8518**

GOLF & FOOT GOLF

QUAIL RUN

327 S. 5th Street, Columbus..... 402-564-1313
www.quailrungolf.com

Quail Run offers 18 holes of golf, snack bar, driving range, chipping green, putting green, professionally stocked golf shop and rental clubs. One of the finest golf courses in the Midwest, this Frank Hummel layout is as picturesque as it is challenging. Multiple tees on each hole make the course playable for golfers of various skills.

ELKS COUNTRY CLUB

5113 63rd Street, Columbus..... 402-564-1451
www.theelksccl.com

The Elks Country Club is a traditional tree-lined semi-private course with some of the best greens in the state. The club has hosted the Nebraska Open since 1993, which has become the 2nd largest annual golf tournament in Nebraska. The club also offers a driving range, chipping and putting green, pool, lounges, full restaurant that is open to the public and a pro shop.

VAN BERG PARK GOLF COURSE

3363 8th Street, Columbus..... 402-564-0761
Built in 1928, this charming 9-hole golf course is just right for a quick round of golf. Named after the famous Columbus horseman, Marion H. Van Berg, it is located on the west side of Pawnee Park off Hwy. 30 and 81. Van Berg also offers a putting green, golf shop essentials, refreshments and snacks. Also try out the 9-hole Foot Golf Course.

STEEPLEVIEW GOLF COURSE

27608 467th Street, Humphrey..... 402-923-1914
www.steepleviewgolf.com

Located just off the Pan American Highway (US 81), this 9-hole course is 25 minutes north of Columbus. Also available are a driving range and clubhouse offering snacks and beverages.

BOULEVARD GREENS MINIATURE GOLF COURSE

3916 18th Street, Columbus..... 402-564-8022
This is a family fun favorite. Located adjacent to Boulevard Lanes, the Miniature Golf Course is open during the summer.

BIKE & WALKING TRAILS

8TH STREET TRAIL

1,178 ft. long | 6-ft. wide | concrete
This trail runs from the northwest entrance of Pawnee Park past Van Berg public golf course to the entrance of the Stires Lake and Wagners Lake residential areas.

BOB LAKE TRAIL

1.3 miles long | 9-ft. wide | crushed limestone
Lake Babcock/Lake North
For biking, walking and jogging, the Bob Lake Trail follows the southwest perimeter of Lake Babcock. A trailhead is located at the

junction of Bob Lake Trail and the Robert White Trail which is across the street from the east entrance of Central Community College. Free parking is available at the east and west trailheads.

DISCOVERER TRAIL

1.1 miles long | 10-ft. wide | concrete
This trail runs from Lake Esther south along 41st Avenue to 38th Street, then east along the north side of 38th Street to 33rd Avenue. It continues north on the west side of 33rd Avenue, past Columbus High School, toward Lost Creek Parkway where it connects to Lost Creek Trail.

LOST CREEK TRAIL, WEST

1 mile long | 10-ft. wide | concrete
This trail runs along the north side of Lost Creek Parkway connecting Discoverer Trail with Wilderness Park Trail.

MONASTERY TRAIL

1.5 miles long | 10-ft. wide | concrete
18th Avenue
The Monastery Trail runs parallel to 18th Avenue and connects the Wilderness Park Trail with the Robert White Trail.

PAWNEE PARK TRAIL

2.0 miles long | 10-ft. wide | concrete | Pawnee Park
This trail invites all ages to walk, jog bike and rollerblade along the winding path through the beautiful Pawnee Park along the Loup River.

POWERHOUSE TRAIL

4,850 ft. long | 10-ft. wide | concrete
The Powerhouse Trail runs about 1 mile and connects the Columbus High Trail to the Wilderness Park Trail. Located between 33rd Avenue and Monastery Road, there is a trail connection from the Columbus Community Hospital to Lakeview High School.

ROBERT WHITE TRAIL

1.5 miles long | 9-ft. wide | crushed limestone | Lake Babcock/Lake North
Great for biking, walking and jogging, the Robert White Trail follows the southern perimeter of Lake Babcock from the Bob Lake Trail to 18th Avenue. There is free parking at the east and west end of the trail.

SUNSET TRAIL

1.3 miles long | 10-ft. wide | concrete
This trail loops around Lake Esther east of Columbus Community Hospital and west of Columbus Wellness Center. Sunset Trail connects to Discoverer Trail.



Pawnee Park

The Perfect Gift

Our Gift Shop Features:

- Dept. 56
- Precious Moments
- Hallmark
- Holiday Decor
- Terry Redlin Plates
- Willow Tree
- Home Decor
- Vera Bradley Bags

Same Day Mail Out Service and Free Delivery on Prescriptions

TOOLEY DRUG

Tooley Drug & Home Care
2615- 13th Street
Columbus, NE 68601
402-564-7205

Clinic Pharmacy
4306 - 38th Street
Columbus, NE 68601
402-562-8627

PLATTE COUNTY MUSEUM



2916 16th St.
Columbus, NE
402-564-1856

*Come and
Bring Your
Friends!*



Hours: Mon.-Fri. 8:30 am-1:30 pm (Year round, except holidays)
Sat. & Sun. 1-4 pm (May - September, except holidays)
E-Mail: info@pchsne.org Web Site: www.pchsne.org

THIRD AVENUE VIADUCT TRAIL

0.8 miles long | 10-ft. wide | concrete

This trail runs parallel to 3rd Avenue from 8th Street, up and over the railroad tracks on the viaduct and to 19th Street. It doesn't currently connect to the other existing trails.

TWO LAKES TRAIL

1.3 miles long | 8 ft. wide | concrete | Lake Babcock/Lake North

This trail entertains recreational opportunities for bike riders, runners, walkers, rollerbladers, nature enthusiasts, bird watchers and wheelchairs. The scenic trail runs along the north side of two lakes (Lake North and Lake Babcock) and winds through the tree lined Lake North Park, Loup Park, and a wildlife refuge along 83rd Street between 18th Avenue and 48th Avenue.

WILDERNESS PARK TRAIL

1.5 miles long | 10 ft. wide | concrete | Wilderness Park Soccer Complex

All ages can walk, jog, bike and rollerblade on the trail around the perimeter of the Wilderness Park Soccer Complex. The Wilderness Park Trail connects with the Monastery Trail.

FITNESS/WELLNESS

ANYTIME FITNESS

333 E 23rd St., Columbus..... 402-564-3488

COLUMBUS FAMILY YMCA

3912 38th St., Columbus..... 402-564-9477
www.columbusymca.org

Full facility YMCA: gymnasiums, wellness equipment, group exercise studios, walking track, swimming pool, warm water pool, whirlpool, saunas and steam rooms, separate youth and adult locker rooms, youth activity room. Programs and services for all ages - youth to senior citizens.

COLUMBUS FIELDHOUSE

3912 38th St., Columbus..... 402-592-4900

The Fieldhouse is not just a facility – it's an experience waiting to be explored. Whether you're a fitness enthusiast, a sports lover or a family looking for fun, there's something for everyone. Featuring state-of-the-art equipment, basketball courts, indoor fields and a quarter-mile walking track, indoor tennis/pickleball courts, racquetball/handball courts, youth soft-play area, and teen gaming zone.

DYNAMIC LIFE THERAPY & WELLNESS

3763 39th Ave., Columbus..... 402-606-4492

GO FIGURE WOMEN'S 24 HOUR FITNESS

1372 22nd Ave., Columbus..... 402-564-2066

GOLDEN GLOW STUDIO (ABOVE VALENCIA SALON & SPA)

2417 13th St., Columbus 402-710-0303

THE SWEATBOX BOXING CLUB

1176 3rd Ave., Unit 8, Columbus..... 402-563-0497

CHILDREN'S MUSEUM

CHILDREN'S MUSEUM

2500 14th St. #1, Columbus.....531-230-8091

The Columbus Area Children's Museum is a brand-new in 2024 space for children birth to ten years old to learn, play and grow. We are located inside the new Columbus Community Building in downtown Columbus and are open 6-days per week! Our hours are: Monday, Wednesday-Saturday from 9am-6pm and Sundays from 10am-5pm. We offer interactive programming, free play, birthday party rentals, summer camp, movie nights, live entertainment and adults-only events. Check us out at www.columbuslearnandplay.org or get social with us on X (Formerly Twitter), Instagram, TikTok, Facebook, Snapchat, Youtube and LinkedIn!



US 30 Speedway

RACING/FAIRGROUNDS

LIVE THOROUGHBRED RACES

Harrah's Columbus Nebraska Racing & Casino
5944 Howard Blvd, Columbus (Opening Spring 2024)

www.columbushorseracing.org
www.caesars.com/harrahs-columbus

Horse racing fans can enjoy live weekend thoroughbred racing in Columbus in the warmer months of 2024. Columbus Exposition & Racing in partnership with Harrah's will have the state's longest thoroughbred racetrack and will offer guests a first-class experience to a historic pastime in Columbus. It is located northwest on US Highway 81. The facilities, owned by Caesars Entertainment and operated in conjunction with the CER, include an open-air grandstand and plaza with a capacity of 2,000. Live racing dates will be posted online.

SIMULCAST THOROUGHBRED RACING

Agricultural Park, 822 15th St., Columbus (January - Spring 2024)
..... 402-564-0133
www.agpark.com

Harrah's Columbus Nebraska Racing & Casino,
5944 Howard Blvd, Columbus (Opening Spring 2024)
www.caesars.com/harrahs-columbus
www.columbushorseracing.org

Ag Park and Columbus Casino, located inside Ag Park, will host simulcasting horse racing until the opening of Harrah's Columbus Nebraska Racing & Casino in the spring of 2024. The Ag Park facility has food and beverage service, complete satellite links, several large screens, betting kiosks and plenty of seating. When open in 2024, race fans will be able to enjoy horse racing from around the country at Caesars Sportsbook & Simulcast located within the new Harrah's casino.

GAMING

Harrah's Columbus Racing & Casino, (Opening Spring 2024)
5944 Howard Blvd, Columbus www.caesars.com/harrahs-columbus
Featuring a 28,000-square-foot-casino and sportsbook with 400 slot machines, 12 electronic table games and 11 live table games for guests 21+ to enjoy. The property is home to the award-winning restaurant, The Brew Brothers, which was founded by the Carano family in 1995, and a bar dubbed Wishbones, a nod to the hometown favorite event center that closed its doors in 2021.

U.S. 30 SPEEDWAY

3 Miles West of Columbus on Hwy. 30..... 402-910-1632

A 1/3 mile clay track offers Stock Car Racing on Thursday nights April through September.

FAIRGROUNDS

Ag Park, 822 15th St., Columbus 402-564-0133
Agricultural Park is home to the county fairgrounds with indoor and outdoor arenas. It boasts an open-air grandstand with a seating capacity of 3,500 and is home to the Platte County Fair held each July. The event halls and second-level club room are available for weddings, receptions, quinceanera, or any other celebration. Stop in and enjoy tasty favorites from the Ag Park Bar and Grille or ask about their catering options.

SWIMMING

COLUMBUS AQUATIC CENTER

1783 10th Ave., Columbus..... 402-563-3222

COLUMBUS FAMILY YMCA-AQUATICS

3912 38th St., Columbus.....402-562-9477

PAWNEE PLUNGE WATER PARK

560 33rd Ave., Columbus..... 402-562-4269

THEATRE

CENTER 7 THEATRES

3100 23rd Street, Columbus..... 402-562-8900
www.cectheatres.com

Features 7 theatres showing the most current movies of the industry. Theatre amenities include: ATM, Digital Sound, Handicap Accessible and Hearing Assisted Listening Devices. For current movie listings call the movie hotline.

PLATTE VALLEY PLAYHOUSE

1158 35th Avenue, Columbus..... 402-564-7827
www.pvphcolumbus.org

The Platte Valley Playhouse is a nonprofit organization dedicated to bringing theater productions to Columbus. The season consists of two main stage productions. Productions are held at Central Community College - Columbus, Fine Arts Center.

TRAILRIDING

H&H LESSONS & TRAILRIDING

4181 Road B., Bellwood 402-270-6153

WILDLIFE MANAGEMENT AREAS

Open to the public for fishing and hunting in season with a particularly good habitat for pheasants, quail and dove. The areas also support an abundance of native plants and flowers with excellent opportunities for bird watching, hiking and enjoying nature. For more information, contact Game & Parks District Office, Norfolk, 402-370-3374

www.outdoornebraska.gov

FLATWATER LANDING WMA

5.5 Acres located 1 mile south of Columbus on Hwy. 81, east and north of the Platte River Bridge. Species to hunt: dove and rabbit. Use of rifles or handguns prohibited.

LOOKING GLASS CREEK WMA

67 Acres located 1 mile south of Monroe. Species to hunt: deer, dove, rabbit, and squirrel. Use of rifles or handguns prohibited.

WILKINSON WMA

939 Acres, 300 Acres are restored wetlands located 5 miles west and 1 mile north of Columbus. Species to hunt: dove, pheasant, rabbit and waterfowl. Nontoxic shot.

ZOO

HORN T ZOO

37692 State Hwy 22, Monroe..... 402-276-0435

The Horn T Zoo is a family run zoo one block west of Monroe on Highway 22. Stop in, take a look and get up close to exotic animals from all around the world. There are animals for kids to pet, a gift shop & party room available. Open weekends June through October. Admission fee.



Serving You With 3 Columbus Locations!



Cornerstone
BANK

Member FDIC

Columbus East
1727 23rd Street
(402) 563-9166

Columbus West
3304 16th Street
(402) 563-1070

Columbus Walmart
818 East 23rd Street
(402) 562-7512



cornerstoneconnect.com



Cornerstone
INSURANCE GROUP

1668 33rd Avenue • Columbus • (402) 564-1457

Insurance products are not a deposit, not FDIC insured, not guaranteed by the Bank and not insured by any Federal Government Agency (except crop insurance, where applicable). An equal opportunity employer.

cigconnect.com



BY CHOICE HOTELS

Free Hot Breakfast
Free Business Center
Free Fitness Center
Clean Rooms
Great Customer Service
Conference Room Seating For 55

*Refrigerators & Microwaves in
All Rooms Whirlpool Tub Suites*

303 23rd St. Columbus, NE • **402-562-5200**



Loup River Bridge
Photo By Gina Borer

Places TO EXPLORE

HISTORIC DOWNTOWN 11TH, 13TH & 14TH STREET, COLUMBUS

Visit historic downtown Columbus to see one of Nebraska's largest continuous use business districts. Note the dates on the buildings. A total of 100 buildings constructed between the late 1800's and the mid 1900's make up this 31.43 acre historic district.

COLUMBUS LOUP RIVER BRIDGE

Highways 30 & 81 South

The Columbus Loup River Bridge spans the Loup River south of Columbus. The Rigid-Connected Parker Through Truss Bridge (also referred to as an overhead truss bridge) was started in 1932, completed in 1933, and is of major importance to both U.S. Highway 30 and U.S. Highway 81. It was listed on the National Register of Historic Places in 1992.

CELEBRATING 60 YEARS OF EXCELLENCE!



COLUMBUS, NEBRASKA
GENERAL CONTRACTORS
BEHLEN BUILDING SYSTEMS

- | | |
|-------------------------|-----------------------|
| BEHLEN BUILDINGS | EDUCATIONAL BUILDINGS |
| INDUSTRIAL BUILDINGS | CRANE SERVICE |
| COMMERCIAL BUILDINGS | EXCAVATING |
| CONSTRUCTION MANAGEMENT | CONCRETE |

402-564-1225

WWW.BDCONSTRUCTIONINC.COM

2154 E. 32ND AVE.
COLUMBUS, NE 68601



LOCAL. EXPERIENCED. COMMITTED.



At Great Plains State Bank, we have a personal interest in the people and communities in which we live and work.



**Great Personal Service.
Local Decision Making.**

- | | |
|------------------------|-----------------------------|
| Checking & Savings | Mobile App & Online Banking |
| Home Mortgage | Refinancing Options |
| CDs and IRAs | Home Equity Loans |
| Business Loans | Money Market |
| Commercial Real Estate | Personal Loans |
| Ag & Farm Operation | Livestock & Equipment Loans |

Columbus • Omaha • O'Neill • Petersburg



GPSbanks.com

“DISCOVERING THE COLORFUL HISTORY OF COLUMBUS” MURAL

Corner of 13th Street & 26th Avenue

This mural was done to commemorate Columbus’ sesquicentennial celebration in 2006 and the city’s history. The mural reveals important moments in the city’s development by peeling through eight layers of time from 2006 to its founding on May 28, 1856. The mural was painted by David Reiser and made possible by private donations.

EVANS HOUSE

2204 14th Street, Columbus402-606-4096

In 1886, Dr. Carroll Dandola Evans, one of Columbus’ early physicians, married Lorena Rose North, niece of Major Frank and Luther North. The construction of their 28-room home began in 1908 and was completed in 1911. The house blends Renaissance, Greek and Spanish Colonial styles. The North brothers, ranching partners with Buffalo Bill, were said to have entertained Cody at the Evans home. It was placed on the National Register of Historic Places in 1991. The Evans House has recently been restored to its original elegance and currently houses professional offices and is available for receptions and private parties. Tours by appointment only.

HUMPHREY VETERANS PARK

600-698 S. 5th St., Humphrey

This park serves as a place of remembrance and solidarity. It recognizes servicemen and women across all branches of the United States Military.

GLUR’S TAVERN

2301 11th Street, Columbus..... 402-564-8615

Built in 1876, Glur’s is the oldest continuously operated tavern west of the Missouri River. The establishment offers food and beverage and was visited on several occasions by Buffalo Bill while he was in Columbus rehearsing his Wild West Show. It was listed on the National Register of Historic Places in 1975.

PLATTE COUNTY COURTHOUSE

2610 14th Street

A full-height porch with classical columns, symmetrical facade, balustrade, pediments and ornate cornices characterizes the Neo-Classical Revival style, used in the design of the Platte County Courthouse. The names of the 13 founders of Columbus are carved in stone around the top of the building. Construction of the Courthouse began in 1920 and was completed in 1922. It was listed on the National Register of Historic Places in 1990.

1857 GOTTSCHALK CABIN

2916 16th Street (Platte County Museum)

Frederick Gottschalk was one of the original 16 founders of the community of Columbus. Although it was not the first home built in Columbus, this 1857 cabin was one of the earliest, largest and farthest north of the Loup River. The 22 by 16-foot cabin was built with massive cottonwood logs found on the banks of the nearby rivers. After withstanding the elements for over 140 years, the cabin was donated to the Platte County Historical Society and is now enclosed in a specially constructed museum addition. Many of the original furnishings are found still inside the cabin.



Columbus Area

ANTIQUE FIRE APPARATUS MUSEUM

2302 13th Street, Columbus • 402-639-1720

Currently, the museum houses a 1949 American LaFrance, a 1935 Chevrolet 4-door sedan, a 1965 snorkel truck and a 1957 open cab American LaFrance truck, as well as 1949 and 1950 Fords. The vehicles were utilized by fire departments in Platte County.



Evans House

THE QUINCENTENARY BELLTOWER

Pawnee Park

The Quincentenary Belltower was officially dedicated on April 25, 1992. The belltower was conceived as a lasting monument to the community's celebration of the Quincentenary, the 500th anniversary of Columbus' first voyage to the New World. The project was made possible by the donation of ten church bells from the collection of Leonard Fleischer. Each of the bells has area historical significance and a plaque near each tower tells of that bell's history. The bells toll every 15 minutes.

THE ANDREW JACKSON HIGGINS NATIONAL MEMORIAL

A.J. Higgins Rd.West Pawnee Park

See page 12 for more information.

PLATTE COUNTY MUSEUM

2916 16th St., Columbus..... 402-564-1856
www.pchsne.org

Operated by the Platte County Historical Society, the museum is housed in three buildings, one of which is an original ward school built in 1912.

Exhibits include Native American artifacts, an authentic turn-of-the-century schoolroom and barbershop, rooms of Victorian clothing, furnishings, and heirlooms, military memorabilia complimenting the Andrew Jackson Higgins National Memorial, the 1857 Gottschalk log cabin, a 1913 Indian motorcycle, a 1914 Chevrolet Baby Grand Touring car, and displays created by each community in Platte County. The museum is open Monday – Friday 8:30 a.m. – 1:30 p.m. year round; Saturday and Sunday from 1-4 p.m. May – September. Admission fee. For tours, call 402-564-1856 or email info@pchsne

ST. MICHAEL'S CATHOLIC CHURCH COMPLEX

309 3rd Street, Tarnov
402-246-4807 or 402-428-2675

Visit this 8.4 acre complex tracing its beginning to 1880 built by immigrants from the province of Galicia, Poland. You will find a church built in 1900 for \$17,000 which houses items for the 1880 church, a boarding school - now a museum - built in 1910/1911. Get the feel of what life in a boarding school was like and walk the halls of this school building and explore the rooms now filled with artifacts of bygone days some dating back to 1880. Check out the refurbished brick outhouse. The former rectory is now the Michael House, a completely furnished rental available for a day, weekend or week built in Gothic Revival Architecture. You will also find an Our Lady of Lourdes Grotto, a brick chicken house and the cemetery plotted in 1880.

In 1990, the complex was placed on the National Register of Historic Places. The museum is open the first Sunday of May - Oct. from 1 to 5 p.m. Private tours by appointment with a meal by arrangement.

HISTORICAL

PAWNEE PARK

U.S. Highways 30 & 81

- **The Villasur Expedition of 1720:** The earliest record of explorers in Platte County.
- **Statue of the Prairie Pioneer:** Marks the North Branch Oregon Trail. The Platte Chapter of the Daughters of the American Revolution dedicated this marker in 1927.
- **Ferry Rock:** Marks the site of the first Loup River Ferry built to serve Columbus.
- **Spanish-American War Veterans Memorial:** Dedicated to all veterans who served in the Spanish-American War and the conflict in the Philippines.

- **Veterans of All Wars Memorial:** Dedicated by Hartman Post No. 84 and Auxiliary American Legion.
- **Statue of Liberty Replica:** Commemorates the 40th Anniversary of the Boys Scouts of America's crusade to strengthen the arm of liberty.
- **Quincentenary Belltower:** Commemorates the 500th Anniversary of Columbus' voyage.
- **Quincentenary Plaque:** Identifies donors to the Belltower Project. Dedicated by the Woodmen of the World Lodge 702 in Columbus.
- **Andrew Jackson Higgins National Memorial:** A marker to the right of the Memorial displays a biography of Andrew Jackson Higgins, highlighting his outstanding accomplishments and contributions to both his community and the nation.

FRANKFORT SQUARE - DOWNTOWN COLUMBUS

- **Union Veterans of the Civil War Memorial:** Dedicated to those from Platte County who served in the Union Army during the American Civil War.
- **Jaycees 50th Anniversary Time Capsule and Sundial:** Commemorates the organization's Golden Anniversary.

764 33RD AVENUE

The North Brothers: Dedicated to Frank & Luther North, highly revered as leaders of the Pawnee Scouts. The North Brothers later became ranching partners with Buffalo Bill and were members of his Wild West Show.



Oregon Trail Statue

BUFFALO SQUARE - 6TH ST. & 15TH AVE.

- **First Home in Columbus Plaque:** This plaque commemorates the location of the first home built in Columbus. The cabin was moved to Pawnee Park and later lost to fire.

COLUMBUS

- **Frank Zybach - 2120 28th St.:** Honors Frank Zybach who invented the center pivot system.
- **Agricultural Park - 822 15th St.:** Dedicated to the many benefactors who, due to their generosity, enabled the dreams of several residents to become reality on June 3, 1941 when Platte County Agricultural Society was formed.
- **Columbus Powerhouse - 4757 3rd Ave.:** Marks the location of one of Nebraska's largest hydroelectric generating plants which is operated by Loup Public Power District.

RURAL PLATTE COUNTY

- **Camp Platte - 175th Ave. & 325th St., North of Columbus:** Marks the site of a CCC camp for veterans in the 1930's.
- **West Hill Community - 460th Ave. & 325th St., North of Genoa:** Marks sites of the West Hill Community & Cemetery.
- **Alfred Maximilian Gruenther - 315 4th St., Platte Center:** Honors Alfred Maximilian Gruenther, honored military veteran born in Platte Center.
- **Granville Cemetery - 445th St. & 325th Ave., SW of Humphrey:** Marks the location of Granville Cemetery.
- **Duncan - Main St. Duncan:** Commemorates the history of the town of Duncan.

Places TO SHOP

Accent Floral & Gifts

3413 21st Street, Columbus
402-606-4713

Art Editions Framing & Gallery

2464 33rd Avenue, Columbus
402-564-8844

Artzy Haven

2422 13th Street, Columbus
402-606-4600

B & M Antiques And Architectural Salvage

507 Hale Avenue, Newman Grove
402-380-2977

Barbara Jean's

2605 13th Street, Columbus
402-562-8657

Bargain Store

1067 23rd Avenue, Columbus
402-270-6893

Betz's Little Shoppe

505 Hale Avenue, Newman Grove
402-447-6048

BeYOUtiful Boutique/ House of Color

2509 13th Street, Columbus
402-910-8525

Beautifully Baked Bakery

3411 21st Street, Columbus
531-230-1577

Bling Columbus

2460 E. 1st Ave., Unit 100,
Columbus
402-942-9050

Blossom's Florals & Gifts

2917 23rd Street, Columbus
402-564-9011

Blue Buffalo Antiques & Curiosities

1265 13th Street, Columbus
402-276-1693

Bomgaars

3614 23rd Street, Columbus
402-563-9600

Brown's Shoe Fit

825 23rd Street, Columbus
402-562-6499

Buckle

118 E. 24th Street, Columbus
402-564-2911

Buresh Meats

3325 21st Street, Columbus
402-606-4712

Busy Bug Thrift & Things

2516 12th Street, Columbus
402-606-4805

Cato's Fashions

118 24th Street, Columbus
402-563-3908

C & Czzz Bzzz

(Bee-Based Products)
413 Apache Street, Columbus
402-910-1842

Choppers Computers

2710 13th Street, Columbus
402-564-1474

Claus' En Paus Quilt Shoppe

2510 13th Street, Columbus
402-564-1618

Colonial Antiques

2803 11th Street, Columbus
402-564-1296

Columbus Feed & Hatchery

2216 11th Street, Columbus
402-564-8104

Columbus Music

2514 13th Street, Columbus
402-564-9431

Cookies & Crumpets Home Bakery

2223 30th Street, Columbus
402-910-4678

Cottonwood Antique Mall & Flea Market

2423 11th Street, Columbus
402-564-1099

Country Lane Gardens

5132 E. 8th Street, Columbus
402-270-9072

Fabulous Forever

2508 13th Street, Columbus,
402-942-3269

Famous Footwear

130 24th Street, Columbus
402-835-3011

Farmer's Wife Boutique & Coffee Company

112 Pine Street, Lindsay
402-428-8000

Flippin' Furniture & More

2502 13th Street, Columbus
402-270-7281

Geno's Minno Mart

1771 33rd Ave, Columbus
402-564-4434

Goodwill

4330 23rd Street, Columbus
402-563-1194

Grace Jewelry

3100 23rd Street, #2, Columbus
402-564-4125

Hobby Lobby

2172 33rd Avenue, Columbus
402-562-0403

Honeycomb Salon & Boutique

29072 Central Hwy, Platte Center
402-202-2962

J Patricks

2520 13th Street, Columbus
402-563-3416

JCPenney

202 E. 24th Street, Columbus
402-564-3221

Jocks Zone

2516 13th Street, Columbus

Just Good Vibes

1354 27th Avenue, Columbus
402-942-9029

Lady's Choice Lingerie

2458 32nd Avenue, Columbus
402-564-7130

Lavender Thyme Gifts

2402 13 Street R, Columbus
402-563-1445

Loveleigh Lane Boutique


300 Main Street, Humphrey



GLURS TAVERN
National Historic Site

**LUNCH
SERVED DAILY**

**2301 11TH ST.
402-564-8615**



**COLUMBUS
FAMILY YMCA**
3912 38th St.
Columbus, NE
402-564-9477
www.columbusymca.org

Market 23

2620 23rd Street, Columbus
402-564-3541

Maurices

104 E. 24th Street, Suite 6,
Columbus
402-564-4252

McChristy Jewelers

2455 E 1st Avenue, Ste. 103,
Columbus
402-564-7529

Meagan's Boutique

2516 13th Street, Columbus
402-564-0064

Mother Nature's Emporium

2707 13th Street, Columbus
402-564-5666

My 15 City

2476 32nd Avenue, Columbus
402-606-7196

Nebraska Cycling & Fitness

2416 13th Street, Columbus
402-564-8284

Nebraska Sports

3325 21st Street, Columbus
402-562-6060

Roxie Pearl Mercantile

1909 23rd Street, Columbus
531-230-1802

Rustic Rosanna Boutique

2630 23rd Street, Columbus
402-910-5136

Sanitair

2827 25th Street, Columbus
402-564-2240

**Sew What Needle
Arts & Quilting**

3415 21st Street, Columbus
402-563-3900

Sign Gypsies

2509 13th Street, Apt. 3, Columbus
402-500-0929

Simon House

1853 10th Avenue, Columbus
402-564-8444

Steele Jayde Boutique

3405 21st Street, Columbus
402-606-4259

Stella & Grace

1505 Minden Drive, Columbus
402-270-1528

**Sweet Harvest
Popcorn Company**

3401 21st Street, Columbus
402-564-0886

Tapestries Vintage

1262 26th Avenue, Columbus
402-276-3296

TC Home Furnishings

47401 268th Avenue, Humphrey
402-920-8900

Terrace Books

2507 11th Street, Columbus
402-606-4877

The Cottage Bookstore

3215 14th Street, Columbus
402-563-3369

The Fort

3315 21st Street, Columbus
402-563-3678

**The Gift Shop in Columbus
Community Hospital**

4600 38th Street, Columbus
402-562-4470

The Rock Store of Nebraska

402-340-4527

The Salvation Army

2740 1/2 32nd Avenue, Columbus
402-564-2184

The Stucco Place

1357 32nd Avenue, Columbus
402-910-0543

Think Treats

2022 11th Street, Columbus

Tooley's Drugstore & Gifts

2615 13th Street, Columbus
402-564-7205

Tweets Sports Shop

2513 13th Street, Columbus
402-564-6481

Urban Farm Boutique

3121 13th Street, Columbus
402-270-5210

Valencia Boutique

2417 13th Street, Columbus
402-276-0008

Vintage Pine Boutique

4712 19th Street, Columbus
402-910-8486

Wal Mart

818 23rd Street, Columbus
402-564-1668

**Werner's Hardware
Shop & Gifts**

313 Main Street, Humphrey
402-923-0727

Wildwood Hollow

371 19th Avenue, Columbus
402-276-7217

XO Bridal

122 East 24th Street, Columbus
402-606-4888

**EVER SO
FNBO.**
Stop on by.



fnbo.com

BANKING • MORTGAGE • WEALTH



Only deposit products are FDIC insured. Investment Products Not FDIC Insured | Not a Deposit or Other Obligation of the Bank | Not Insured by any Federal Government Agency | Not Guaranteed by the Bank | May Lose Value



The great big small bank

Getting AROUND

AIRCRAFT CHARTER, RENTAL & LEASING

AVCRAFT

1334 Bill Babka Drive, Columbus402-564-7884

COLUMBUS AIRCRAFT INC.

2851 - 14th Avenue, Columbus.....402-563-9101

AIRPORTS

CENTRAL NEBRASKA REGIONAL AIRPORT

3773 Sky Park Road, Grand Island308-385-5170
www.flygrandisland.com

COLUMBUS MUNICIPAL AIRPORT

1308 Bill Babka Drive, Columbus..... 402-564-7377

EPPLEY AIRFIELD

4501 Abbott Dr., Suite 2300, Omaha..... 402-661-8017
www.eppleyairfield.com

LINCOLN AIRPORT

2400 W. Adams Street, Lincoln..... 402-458-2480
www.lincolnairport.com

TAXI SERVICE

CHECKER CAB COMPANY..... 402-371-5800

Car Show at
Columbus Days



BIKE SHARE PROGRAM

Columbus in Action (CIA) is proud to continue its Bike Share program. Columbus residents and visitors can explore the city on two wheels by renting a bicycle for a small fee.

Bike Share bikes are available at the following locations:

- Columbus Community Hospital
- Columbus Wellness Center

AUTO RENTALS

COLUMBUS AUTO MART

2817 - 13th Street, Columbus402-564-4952

ENTERPRISE RENT-A-CAR

917 23rd Street, Columbus.....402-564-0022/1-800-736-8222

PERFORMANCE RENT-A-CAR

2119 - 13th Street, Columbus.....402-563-1937/1-800-860-8243



Columbus Bank

AND TRUST COMPANY

colbank.com

402-564-1234

Member
FDIC



**QUALITY. DEPENDABILITY.
INNOVATION.**

Duo Lift is proud to design and manufacture high quality and innovative agricultural and fertilizer equipment that is trusted for its dependability to withstand and deliver results in the toughest conditions.



(800) 243-2583
2810 38 ST COLUMBUS
WWW.DUOLIFT.COM

Travel

NEBRASKA'S MAINSTREET

www.lincolnhighwaynebraskabyway.com



“A road across the United States, Let’s build it before we’re too old to enjoy it.”
— Carl G. Fischer

Carl G. Fischer had a vision. A highway that would span 3,380 miles from New York to San Francisco through centers of population and points of scenic and historic interest. From that

vision came the birth of “The Lincoln Highway”. It was to be a highway of the people, by the people and for the people.

On October 31, 1913, the Lincoln Highway was dedicated as the first coast-to-coast road. The route spanned the State of Nebraska and included Platte County. When traveling from east to west, the original Lincoln Highway entered Platte County in the southeast corner and

zigzagged through Platte County and Columbus. It continued west through Duncan and exited the southwest corner of the county.

Hotels, car garages, campgrounds, service and gas stations were erected to accommodate the increased visitor travel. Some of those buildings still exist along 13th Street today. To welcome visitors to Columbus the famous Lincoln Highway arches were dedicated in 1940. These arches were located at 23rd Street and 23rd Avenue, and on 33rd Avenue.

In the mid 1920’s the Lincoln Highway was renamed U.S. Highway 30. Over the years the route was changed to better accommodate the increased traffic and improved roads. Today parts of U.S. Highway 30 travel along the same route through Platte County as the original highway did in 1913.



Oregon Trail Monument



Campground at the Junction of Lincoln & Meridian Highways



Lincoln Highway bridge over the Loup River

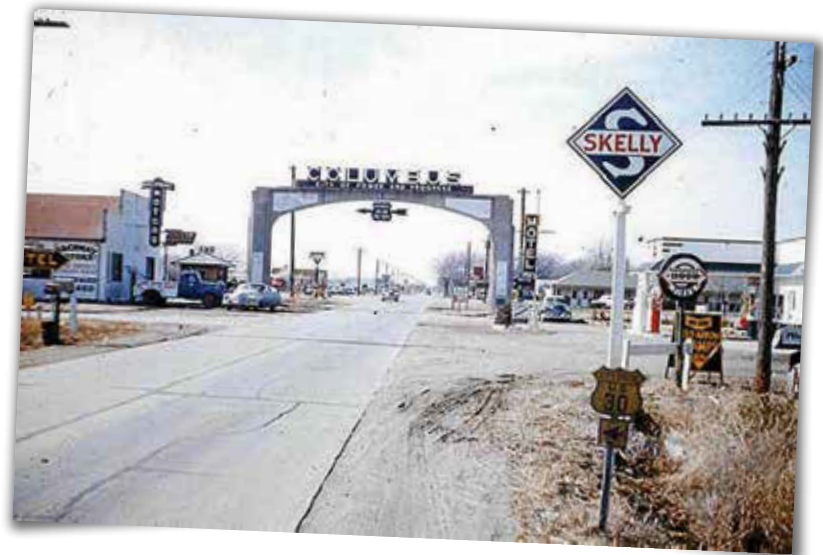
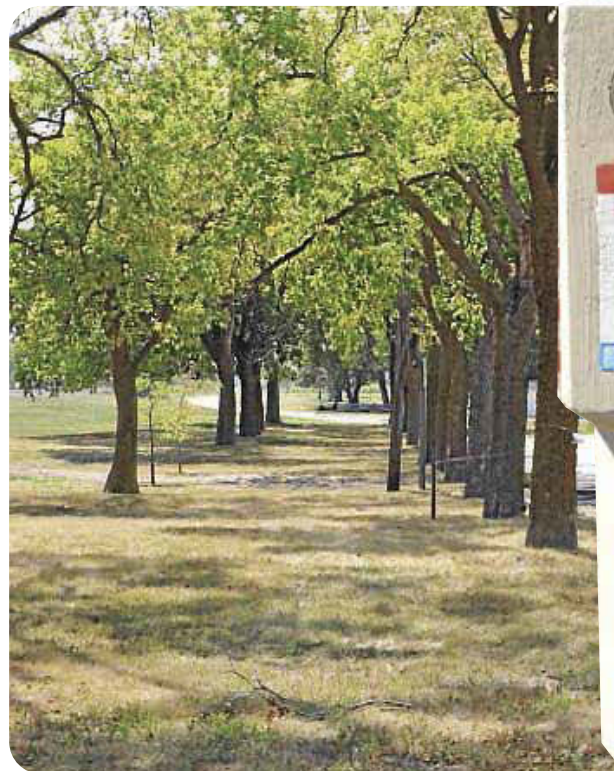
CHECK OUT THESE POINTS OF INTEREST (TRAVELING WEST TO EAST):

THE LINCOLN HIGHWAY GARDINER STATION SECTION – RURAL PLATTE COUNTY, 115TH ST. (BETWEEN DUNCAN & SILVER CREEK)

This 1.2-mile Gardiner Station section of the original Lincoln Highway and the Pratt pony-truss bridge spanning Prairie Creek were in use from 1913 to 1928. The original highway section and bridge are listed in the National Register of Historic Places.

AVENUE OF TREES & LINCOLN HIGHWAY MARKERS – DUNCAN

The Avenue of Trees is located north of the railroad tracks on the west side of the main entrance into Duncan. A Lincoln Highway marker, in its original position since 1928, sets on the southeast corner of Main Avenue & North Boulevard, east of the Avenue of Trees. The other marker is located on the corner of Main Avenue & 9th Street.



GOTTBERG AUTO COMPANY - COLUMBUS

(currently known as Dusters/Gottberg Brew Pub)
28th Ave. & 13th St.

The building was built in 1920, as a Ford assembly plant, garage and dealership by Max Gottberg. The building was built for \$65,000 and sold Fords from it until 1944. Look up to see the concrete antique car ornaments along the top of the outside walls.

EVANS HOTEL – COLUMBUS

(currently named Park Plaza)
27th Ave. & 13th St.

This large building is the original Evans Hotel constructed in 1913. The name is still on the capstone and it stills appears much like it did in the 1924 Lincoln Highway Road Guide.

LINCOLN HIGHWAY GARAGE – COLUMBUS

23rd Ave. & 13th St. (Currently known as Columbus Area Antique Fire Apparatus Museum)

In 1915, as a result of the incorporation of the Lincoln Highway Garage Association, this service station garage was built. By 1930, this garage was sold to Ed M. Nielsen and operated under that surname for 74 years.

GLUR'S TAVERN – COLUMBUS

23rd Ave. & 11th St.
Glur's Tavern was established in 1876 and is the oldest continuously operated tavern west of the Missouri River.

LINCOLN HIGHWAY MARKER - REPLICA

33rd Ave. & 7th St.
This replica of an original Lincoln Highway marker was erected in 2013 in recognition of the 100th Anniversary of the Lincoln Highway.

PLACESTOSTAY

		Major Credit Cards	Total Rooms	Non-smoking rooms	Suites	Handicap rooms	Meeting facilities	Pool	Lounge	Restaurant	Pets allowed	Cable	Free local calls	Comp. breakfast	Book online	Nearby restaurants	Microwave, refrigerator	Other amenities/services	
Econo Inn	3803 23rd Street 402-564-9955	★	39	28	1	2	✓			✓	✓	✓	✓	✓	✓	✓	✓	✓	Whirlpool Suite, Free High Speed Wireless Internet
Columbus Inn	371 33rd Ave. 402-564-2527	★	44	36	2	2				✓	✓	✓						✓	Free High Speed Internet, Iron, Hair Dryer, Truck Parking, Guest Laundry
Days Inn & Suites	1716 E. 23rd St. 402-564-1266 www.daysinn.com	★	70	70	24	3	✓				✓	✓	✓	✓	✓	✓	✓	✓	Full Kitchens, Free High Speed Wireless Internet, Fitness Center, Iron, Hair Dryer, Laundry Services, Plugins
Hampton Inn	3536 23rd Street 402-835-2099	★	80	80		4	✓	✓		✓	✓	✓	✓	✓	✓	✓	✓	✓	Free High Speed Internet, Fitness Center, Pool, Spacious Rooms, Meeting Space for up to 35
Holiday Inn Express Hotel & Suites	524 E. 23rd St. E. Hwy. 30 402-564-2566 www.younes.com	★	90	88	19	4		✓			✓	✓	✓	✓	✓	✓	✓	✓	Free High Speed Wireless Internet, Fitness Center, Whirlpool, Award Winning Motel, Mon.-Thurs.
Ramada Columbus & Rivers Edge Convention Center	265 33rd Ave. 402-835-4350 www.riversedgecolumbus.com	★	140	140	2	7	✓	✓	✓	✓	✓	✓	✓	✓	✓	✓	✓	✓	Free High Speed Wireless Internet, Fitness Center, Comp. Evening Reception, Mon.-Thurs., Award Winning Hotel "Best of the Best" Award
Sleep Inn & Suites by Choice Hotels	303 23rd St. E. Hwy. 30 402-562-5200 www.sleepinncolumbus.com	★	95	95	12	4				✓	✓	✓	✓	✓	✓	✓	✓	✓	Free High Speed Internet, Laundry, Fitness Center, Truck Parking
Sundown Motel	3220 8th St. 402-564-2729	★	22	9	2	0				✓	✓	✓						✓	Truck Parking, Plug-Ins, All Ground Level Rooms
Super 8 Motel	3324 20th St. 402-563-3456 www.super8.com	★	63	47	1	1				✓	✓	✓	✓	✓	✓	✓	✓	✓	Free High Speed Internet, Plug Ins, Truck Parking, Guest Laundry
Platte Valley Inn	3919 23rd St. 402-562-7595 www.plattevalleyinn.com	★	36	30	4	2				✓	✓	✓	✓	✓	✓	✓	✓	✓	Free High Speed Internet, Iron, Hair Dryer, Guest Laundry Services
Midway Motel	26560 State Hwy 81, Humphrey 402-923-0522	★	13	9	0	0					✓	✓						✓	All Ground Level Rooms, Bus Parking, Plug-Ins

Fairfield by Marriott Inn & Suites and TownePlace Suites by Marriott Inn & Suites will be operational in the Spring of 2024.

BED&BREAKFAST

Cozy Cabin Lane-Airbnb	26259 - 249th St., Columbus NE 68601 402-270-3893 https://airbnb.com/h/cozy-cabinlane cozycabinlane@gmail.com	★	3	3	✓	✓					✓			✓					The perfect location to host family gatherings or a weekend to catch up with friends!
The Neighborhood Sanctuary	3770 18th Avenue, Columbus NE 68601 https://providingpropertysolutions.com/book-your-stay/	★	3	3	✓	✓					✓			✓	✓	✓			Beautiful 3 bed, 2 bath property in what used to be a church. This is a great place to hold events and meetings.
The Wild Plum Bed & Breakfast	30429 - 257th Avenue Platte Center NE 68653 402-246-9248 thewildplumbnb@gmail.com www.wildplumbnb.com	★	5	5	3	1	✓	✓			✓		✓	✓				✓	Gorgeous rural setting! There are a wide variety of rooms to fit your style and comfort.

CAMPGROUNDS

		Availability	RV amenities**	Tent camping	Rest facilities***	Admission fees
Camp Pawnee 2330 S. 16th Street 10 hookups/spaces for camping 2 Buildings for Rent Family Reunions, Weddings, Etc.	402-363-8035 camppawnee@yahoo.com	May 1 - Nov. 1	E, W	✓	F	✓
Hwy 81 RV Park 23817-242nd Ave. Pull-through, level spaces with full hookups 22 trailers	402-564-2691 https://highway81rvpark.webs.com	Apr. 1 - Nov. 1	E, W, S			✓
Lake North* 4 mi. N at US Hwy. 30 & 18th Ave. 100 tents, 25 trailers	402-562-5709 or 402-564-3171 www.loup.com	May 1 - Nov. 1	E, W	✓	P	✓
Little Village Campground 240 4th Street, Platte Center, 9 RV Hookups	402-270-1422 https://littlevillagecampground.com	Year-round	E, W, S			✓
Loup Park* 4 mi. N at US Hwy. 30 & 18th Ave., 1½ mi. W. 120 tents, 30 trailers	402-562-5709 or 402-564-3171 www.loup.com	May 1 - Nov. 1	E, W	✓	P	
Powerhouse Park* 1.5 mi. N at US Hwy. 30 & 3rd Ave. 20 tents, 6 trailers	402-562-5709 or 402-564-3171 www.loup.com	Year-round		✓	P	
River Land Cabins & Campground 3919 SE 16th Street, Columbus NE 68601 RV Hookups, tent camping and 3 cabins	402-910-8166 riverlandcampcabins@gmail.com	Year-round	E, W, S	✓	F, S	✓
Tailrace Park* 3½ mi. E on 8th St., 1½ mi. S. 30 tents	402-562-5709 or 402-564-3171 www.loup.com	Year-round		✓	P	
Maple Creek Recreation Area Rd 1A at Leigh 10 tents, 50 RV camping sites	402-371-7313 www.lenrd.org/maple-creek-recreation-area	Year-round	E, W	✓	F, S	✓

*7 day stay limit within a 30-day period | **E = Electricity W = Water S = Sewer | ***F = Flush toilets P = Pit toilets S = Showers

Did you know?



We have **11**
Hotels in Platte County.
That's a total of **688**
Hotel Rooms!

We will
Help you plan!



We offer:

- Agenda Design/Planning
- Name Badges
- Entertainment
- Industry Tours
- Local Info & Visitor Guides
- Welcome Banners
- Speakers
- Itineraries
- Walking Tours
- Negotiating Group Rates
- Day Passes
- History Tours
- Program Assistance
- Event Promotion
- Catering
- Retail Discounts
- Restaurant Discounts
- Reservations
- Competitive Event Bid Pricing

There is a *Variety* of **Meeting Spaces**
available for small groups of 15 to large groups of 1000.

Hotels & Motels

Platte County, NE

Hotel/Motel	# of Rooms	Meeting Facilities
Columbus Inn	40	
Days Inn & Suites	70	✓
Econo Inn	39	✓
Hampton Inn	80	✓
Holiday Inn Express	90	
Midway Motel, Humphrey	13	
Ramada Columbus		
River's Edge	140	✓
Convention Center		
Sleep Inn & Suites	95	
Sundown Motel	22	
Super 8	63	
Platte Valley Inn	36	

COMING IN SPRING: 2 Additional Hotels located on Hwy 81

Entertainment *Options*

- Andrew Jackson Higgins Memorial
- Antique Firetruck Museum
- Escape Room
- Glur's Tavern
- Horn T Zoo
- Children's Musuem
- Live Thoroughbred Horse Racing
- Pawnee Plunge Water Park
- Walk/Bike Trails

For additional
information

Please visit our website at:
www.visitcolumbusne.com
Theresa Grape: 402-276-3606
visitcolumbusne@gmail.com



Platte County

PLACES TO WORSHIP

1C CHURCH

2200 - 28th Ave, Columbus
..... 402-835-5511

CHURCH OF JESUS CHRIST OF LATTER DAY SAINTS

4400 - 33rd St., Columbus
..... 402-564-6896

CONNECTION CHRISTIAN CHURCH

3205 - 12th St., Columbus
..... 402-942-3484

CRESTON BAPTIST CHURCH

310 Pine St., Creston
.....402-285-9310

DISCOVER HOPE INTERNATIONAL CHURCH

3100 23rd St., Suite 8, Columbus
..... 402-276-3691

FEDERATED CHURCH

2704 - 15th St., Columbus
..... 402-564-2812

FIRST UNITED METHODIST CHURCH

2710 - 14th St., Columbus
..... 402-564-8463

GRACE EPISCOPAL CHURCH

2053 - 23rd Ave., Columbus
..... 402-564-0116

GRACE LUTHERAN CHURCH

216 1st St., Platte Center
.....402-246-2040

HIGHLAND PARK EVANGELICAL FREE CHURCH

4115 - 38th St., Columbus
..... 402-564-5853

HOLY FAMILY CATHOLIC CHURCH

103 3rd St., Lindsay
..... 402-428-2455

IMMANUEL LUTHERAN CHURCH - LCMS

1470 - 24th Ave., Columbus
.....402-564-0502

JEHOVAH'S WITNESSES

4726 - 27th St., Columbus
..... 402-564-4141

LA NUEVA JERUSALEM

1260 25th Ave., Columbus
.....402-276-5596

MONROE METHODIST CHURCH

334 Gerrard Ave., Monroe
.....402-249-2625

NORTH PARK BAPTIST CHURCH

2764 - 45th Ave., Columbus
..... 402-563-4223

PEACE LUTHERAN CHURCH - MISSOURI SYNOD

2720 - 28th St., Columbus
..... 402-564-8311

ST. BONAVENTURE CATHOLIC CHURCH

1565 - 18th Ave., Columbus
..... 402-564-7151

ST. JOHN'S LUTHERAN CHURCH - ELCA

10785 - 280th St., Columbus
..... 402-564-8707

ST. ANTHONY'S CATHOLIC CHURCH

562 - 17th Ave., Columbus
..... 402-564-3313

ST. ISIDORE CATHOLIC CHURCH

3921 - 20th St., Columbus
..... 402-564-8993

ST. ANSGAR ROSENBERG LUTHERAN CHURCH

40692 490 Ave., Lindsay

ST. FRANCIS OF ASSISI CATHOLIC CHURCH

203 S 5th St., Humphrey
.....402-923-0913

St. Joseph
Catholic Church
Platte Center



ST. JOSEPH'S CATHOLIC CHURCH
155 A St., Platte Center
.....402-246-2255

ST. LUKE'S UNITED CHURCH OF CHRIST
1072 - 21st Ave., Columbus
..... 402-564-8862

ST. MICHAEL'S CATHOLIC CHURCH
309 3rd St., Tarnov
.....402-923-0913

ST. PETER'S LUTHERAN CHURCH
410 Pine St., Creston
.....402-285-0466

ST. STANISLAUS CATHOLIC CHURCH
1120 8th St., Duncan
.....402-246-2255

SEVENTH DAY ADVENTIST CHURCH
3026 - 38th St., Columbus
..... 402-563-3280

SHELL CREEK BAPTIST CHURCH
33981 205 Ave., Columbus
.....402-246-4893

TEMPLO DE PODER GETSEMANI
2336 23rd St., Suite 2, Columbus
..... 402-606-4788

VICTORY CHRISTIAN FELLOWSHIP
2665 - 14th Ave., Columbus
..... 402-564-6403

WORD OF LIFE CHURCH OF THE ASSEMBLIES OF GOD
3701 - 23rd St., Columbus
..... 402-564-6262

ZION LUTHERAN CHURCH
23461 355 St., Platte Center
.....402-246-3640

BIBLE BAPTIST CHURCH
1771 43rd Ave, Columbus
..... 402-563-3849

CHRIST LUTHERAN CHURCH-LCMS
32392 - 122nd Ave., Columbus
..... 402-564-5680

CHURCH OF CHRIST
1573 - 25th Ave., Columbus
..... 402-564-7229

COLUMBUS BEREAN CHURCH
3027 - 38th St., Columbus
..... 402-562-5647

EVERLASTING LOVE CHURCH
4714 - 27th St., Columbus
..... 402-564-0342

FIRST BAPTIST CHURCH
3210 - 30th St., Columbus
..... 402-564-4279

TRINITY LUTHERAN CHURCH LCMC
2200 - 25th St., Columbus
..... 402-564-8547

WORD OF LIFE CHURCH
3701 - 23rd St., Columbus
..... 402-564-6262

SPANISH SPEAKING

SPANISH SEVENTH DAY ADVENTIST CHURCH
2317 13th Street, Columbus, NE
..... 402-504-2306

CENTRO MISIONERO DE CRISTO
2700 33rd Ave., Columbus
..... 402-914-0041

IGLESIA DEL EVANGELIO EMMANUEL
2207 11th St., Columbus
..... 402-564-6529

IGLESIA EVANGELICA CASA DE ALFARERO
2456 33rd Ave., Columbus
.....N/A

IGLESIA CRISTIANA ALIENTO DE VIDA
3806 Howard Blvd. Columbus
..... 402-910-9598

IGLESIA GUERREROS EN JESUSCRISTO
1257 26th Ave., Columbus, NE
..... 402-942- 4850

MINISTERIO DE IMPACTO PALABRA VIVA
3722 16th St., Columbus
..... 402-276-6688

MISION PENTECOSTAL FUENTE DE VIDA INC
1454 21st Ave., Columbus
..... 402-270-0990



Behlen is proud of our strong heritage in Columbus – the city of Power and Progress. Throughout our company’s 85 year history, our diversity has allowed us to keep growing and competing in a global economy. Behlen Partners in Progress (employees) celebrate our great heritage and look forward to a bright future together.

Behlen Business Units

Behlen Country
Behlen Building Systems
Trident Building Systems
Behlen Grain Systems

Behlen Custom Fabrication
Behlen Joiners
Hilton Int’l Industries, Co.
BMC Transportation



Learn more about Behlen today!
www.behlenmfg.com



NOW OPEN!

COLUMBUS FIELDHOUSE

Visit Columbus, Nebraska

SPACE FOR EVERYONE

The Columbus Fieldhouse is a state-of-the-art facility that includes:

- Tennis courts
- A football field
- A soccer field
- Volleyball courts
- Basketball courts
- A suspended track for walking and running
- Both indoor and outdoor areas for competitive sports and fitness and recreation areas
- Space for physical and rehabilitation services



Scan to discover more about the Columbus Fieldhouse.

For more information about the Columbus Fieldhouse, visit columbushosp.org.

