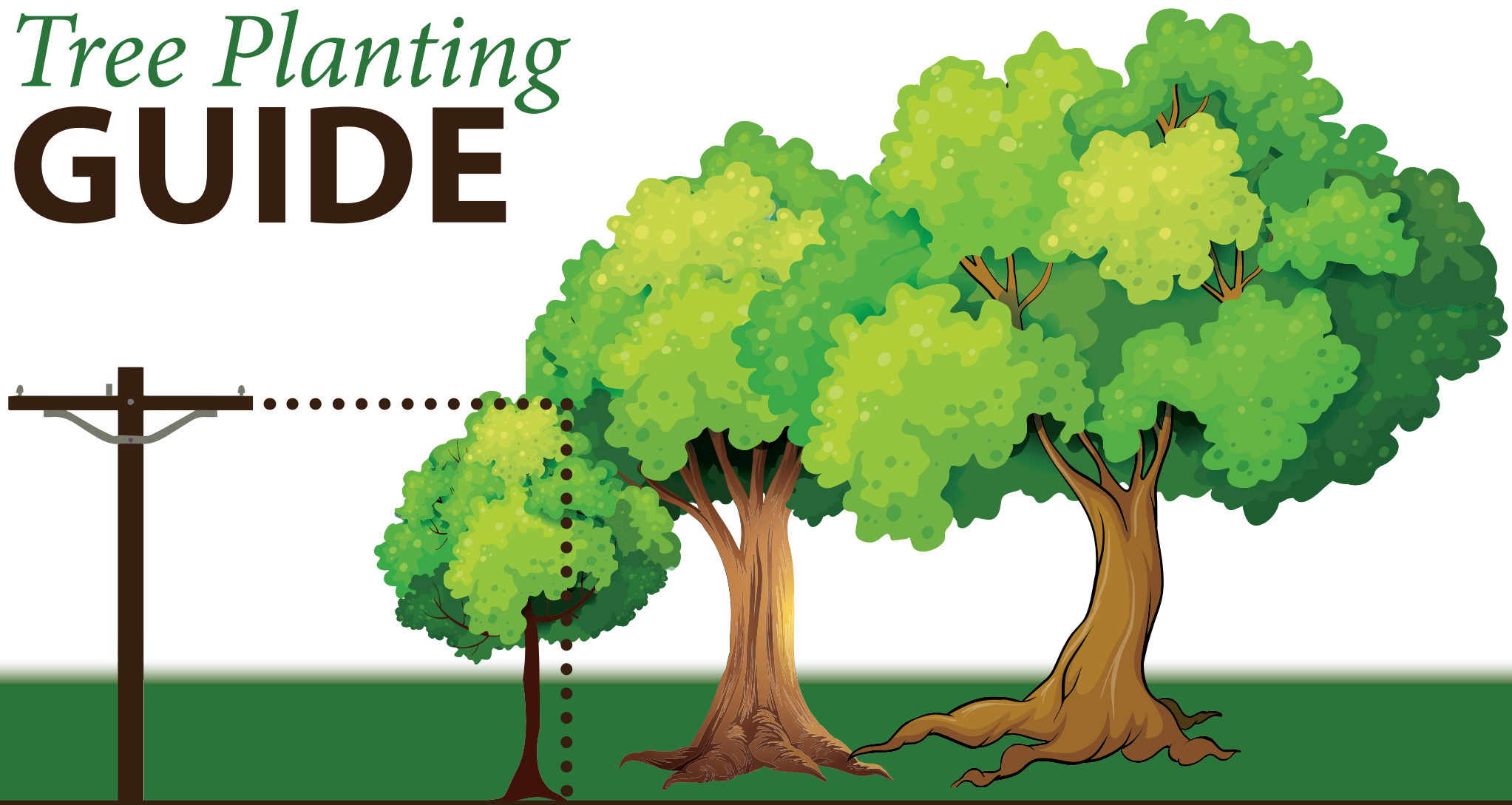


Tree Planting GUIDE



THINK BEFORE PLANTING!

Before you plant, look around to see how the trees will affect overhead utility lines. A good rule of thumb is to plant trees at least as far away from the utility lines as the tree is expected to grow.

10'

STOP

NO TREE ZONE

No trees within 25' of power lines

20'

30'

CAUTION

SMALL TREE ZONE

Plant trees less than 25' in height/spread at least 25' from power lines

40'

CAUTION

MEDIUM TREE ZONE

Plant trees 25'–40' in height/spread at least 40' from overhead power lines

50'

60'

70'

GO

LARGE TREE ZONE

Plant trees larger than 40' in height/spread at least 60' from overhead power lines